



INDOFINE Chemical Company, Inc.

121 Stryker Lane, Bldg. 30, Suite 1 • Hillsborough, NJ 08844 • U.S.A.

Phone: (908) 359-6778 • FAX: (908) 359-1179

website: www.indofinechemical.com

e-mail: chemical@indofinechemical.com

CERTIFICATE OF ANALYSIS

Cat No.: 19-896

<u>Product:</u>	2,2'-DIMETHYLSUCCINIC ACID METHYL ESTER
<u>CAS Number:</u>	[32980-26-0]
<u>Lot Number:</u>	1005039
<u>Chemical Formula:</u>	$C_7H_{12}O_4$
<u>Molecular Weight:</u>	160.17
<u>Moisture (KF):</u>	0.4%
<u>Appearance:</u>	Off white to brown low melting solid
<u>Solubility:</u>	Clear solution in Chloroform
<u>Storage:</u>	Cool dry place
<u>Purity (GC):</u>	98%



INDOFINE Chemical Company, Inc.

121 Stryker Lane, Bldg. 30, Suite 1 • Hillsborough, NJ 08844 • U.S.A.

Phone: (908) 359-6778 • FAX: (908) 359-1179

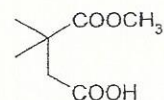
website: www.indofinechemical.com

e-mail: chemical@indofinechemical.com

GC ANALYSIS

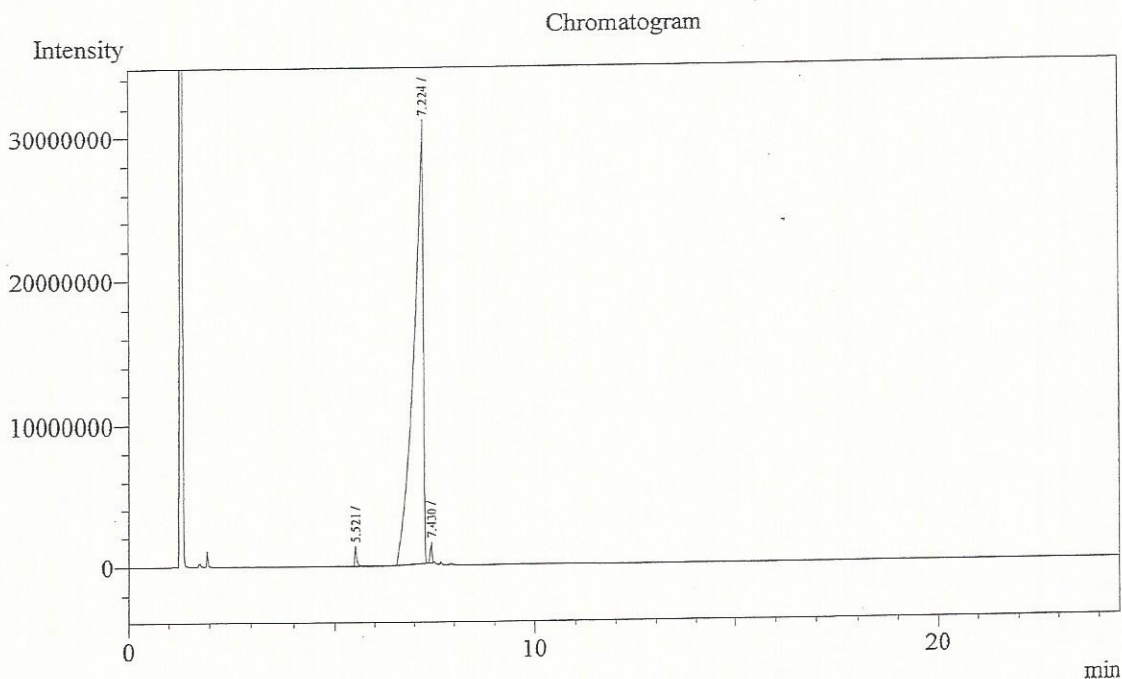
Cat. No.: 19-896
Product: 2,2'-Dimethyl succinic acid methyl ester
Lot No.: 1005039

Analysis Date & Time : 5/23/2010 4:00:43 PM
User Name : Madhuri
Sample Name : 2,2-Dimethyl Succinic acid Methyl ester
Sample ID :
Method Name : D:\Methods\BRC Method.gcm
Data File Name : D:\2010\May-10\230510H.gcd



2,2-Dimethyl Succinic acid methyl Ester

Description
Column : ZB-5
Column Temp : 60(2) -30-280(2)°C
Inj Temp : 275°C
Det Temp : 300°C



Peak Table - Channel 1

Peak#	Ret.Time	Area	Height	Area%
1	5.521	4856808	1345685	0.9753
2	7.224	488187738	30599337	98.0363
3	7.430	4921524	1446187	0.9883
Total		497966070	33391209	100.0000



INDOFINE Chemical Company, Inc.

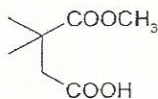
121 Stryker Lane, Bldg. 30, Suite 1 • Hillsborough, NJ 08844 • U.S.A.

Phone: (908) 359-6778 • FAX: (908) 359-1179

website: www.indofinechemical.com

e-mail: chemical@indofinechemical.com

Cat. No.: 19-896
Product: 2,2'-Dimethyl succinic acid methyl ester
Lot No.: 1005039



2,2-Dimethyl Succinic acid methyl Ester

R-20230
ACID
1H IN CDCL3
AVANCE-300

